


PACTBILL

PORT ARANSAS COMMUNITY THEATRE

Disney • PIXAR

FINDING NEMO



©Disney/Pixar

JR.

MAY 30 – JUNE 9, 2024

PORT ARANSAS COMMUNITY THEATRE

Up Next

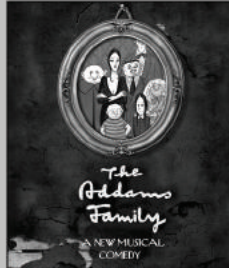
TICKETS



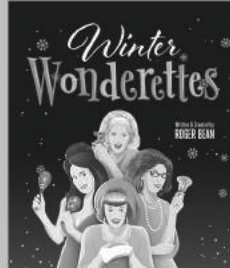
2024 SEASON SHOWS



JULY 18 - 28



OCT. 10 - 27



DEC. 5 - 22



PILLAR
ENGINEERING
Windstorm, Civil and Structural Engineering

[361] 960-4515 • kyle@pillarengineers.com • pillarengineers.com

RAINMAN
IRRIGATION

Lic. #13051

\$\$\$ Interested in saving 1/3
off your water bill due to
your irrigation system? \$\$\$

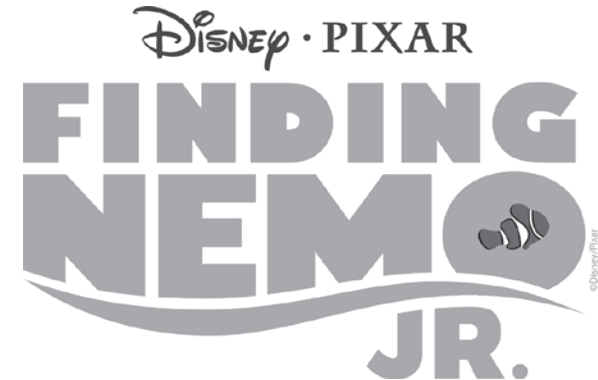
Call (361) 717-4261

Landscape Lighting Installation
Lawn Sprinkler Installation & Repair



MAY 30 - JUNE 9, 2024

PORT ARANSAS COMMUNITY THEATRE
production of



Book, Music and Lyrics by
Kristen Anderson-Lopez and Robert Lopez

Book Adapted by
Lindsay Anderson

Music and Orchestrations Adapted and Arranged by
Myrna Conn

Directed by **Sarah Robinson**

Based on the 2003 Disney / Pixar film Finding Nemo written by
Andrew Stanton, Bob Peterson, David Reynolds and directed by Andrew Stanton

Disney's Finding Nemo JR. is presented through special arrangement with and all
authorized materials are supplied by Music Theatre International, New York, NY
(212) 541-4684 mtishows.com

PORT ARANSAS COMMUNITY THEATRE
2327 State Highway 361, Port Aransas, TX
(361) 749-6036 • portaransascommunitytheatre.com

THE CRAZY CAJUN



Seafood & Cajun Specialties!

Serving Port Aransas &
The Coastal Bend Since 1987

Fun Family Atmosphere!
Large Parties Welcome!

303 Beach St. • Port Aransas • (361) 749-5069

Thank You

From the PACT Board of Directors

On behalf of the PACT Board of Directors, thank you for being at our production and supporting regional live theatre. Also, thanks to my fellow volunteer board members for their dedication and efforts throughout this season. Thank you to the dozens of volunteers who help with concessions, tickets, building sets and so much more. PACT couldn't continue this tradition of excellence without their dedication. I deeply appreciate each and every one of them. And finally, overseeing this monumental effort on a day-to-day basis is our theatre manager, Su-z Kleinmans, who takes care of too many things to mention.

Don't forget to check out our remaining 2024 season as we continue to produce some of the best live shows and concerts in the Coastal Bend. If you like what you see, tell everyone and please come back for *Males Order Brides*, *The Addams Family Musical* and our holiday show, *The Winter Wonderettes*.

Rick Adams, President, PACT Board of Directors



Thank You

BETH & KELLY OWENS

for supporting

The
ARTS

A NOTE FROM THE DIRECTOR



Welcome to *Finding Nemo JR.*, a production that holds a special place in my heart for many reasons. As you take your seats, I invite you to journey with us beneath the waves, where adventure and friendship await.

Choosing this show was a deeply personal decision for me. I find myself relating to both Marlin and Nemo in different ways. Like Marlin, I often feel the need to be in control and ensure that every aspect of a project goes according to plan. But, like Nemo, I've also embarked on new adventures, facing uncertainty and challenges along the way.

My journey in theatre has been shaped by the incredible people I've had the privilege of meeting and working with. Due to bullying in high school, I had decided to quit theatre in its entirety. My senior year, my family moved to Rockport, Texas, where I met a high school teacher who reignited my passion for theatre. This led me to discover the vibrant world of community theatre, where I met a talented dancer whose encouragement pushed me to further explore theatre on a larger scale.

Each step of the way, I encountered individuals who inspired and supported me, leading me to be a part of two PACT productions where staged friendships would become real. Now, as I stand at the helm of this production, I am reminded of the journey that brought me here, the people who made it possible and how lucky I am to have that theatre teacher, that dancer and my two stage besties be a part of my production team.

Finding Nemo JR. is more than just a musical — it's a celebration of the connections we make and the experiences that shape us. It's a testament to the power of community and the resilience that arises from overcoming obstacles together.

Throughout the rehearsal process, we faced our own challenges, from overbooked schedules, scattered rehearsal spaces and even tag teaming online finals between me and our stage manager. But through it all, our community came together, united in our shared goal of bringing theatre to the youth of South Texas.

So, as you watch the story unfold before you, I invite you to reflect on your own journey and the people who have touched your life along the way. May this production serve as a reminder that we are stronger together, and that every obstacle we overcome only adds to the beauty of the final masterpiece.

Thank you for joining us on this adventure. Enjoy the show!

Sarah Robinson, Director

SEAFOOD & STEAKS • SANDWICHES • BURGERS • FULL BAR

Open Every Day 11 a.m. – 2 a.m.

Kitchen Open Until 1 a.m.



The PERFECT place to go after the show!

2034 State Hwy 361, Port Aransas, TX
(361) 749-TACO (8226) • kodyrestaurant.com



jackfish

port aransas

(361) 339-1089

3411 S. ELEVENTH ST. PORT ARANSAS, TX 78272



Fire It!
Ceramics

611 S. Alister St. • Port Aransas, TX • (361) 749-7967 • fireitceramics.com

MUSICAL NUMBERS

ACT I

Prologue
Big Blue World (Part 1)
Big Blue World (Part 2)
The Drop-Off
Abduction / Big Blue World (Reprise)
Dory's Ditty
Fish Are Friends Not Food
Seagulls 1
Where's My Dad?
We Swim Together
Just Keep Swimming (Part 1)
Just Keep Swimming (Part 2)
Seagulls 2
Not My Dad

20 MINUTE INTERMISSION

ACT II

Go With the Flow
One Dedicated Father
That's My Dad
We Swim Together (Reprise)
Seagulls 3
Just Keep Swimming Together
Finale (Part 1)
Finale (Part 2)

EVACUATIONS: In the event of an evacuation, *DO NOT RUN*. Walk to the emergency exit nearest you. **NO SMOKING:** Smoking of any kind, including the use of E-cigarettes, is not permitted in any area of the theatre. Patrons who wish to smoke may do so outside the building. **REFRESHMENTS:** Outside food and beverages are not permitted inside the building during performances and events. **NO RECORDING DEVICES:** The use of any audio or video recording device or the taking of photographs, either with or without flash, is strictly prohibited. As a courtesy to others, please turn off all electronic devices, such as cell phones, and refrain from texting during the performance.

CAST

(in alphabetical order)

Dory SOPHIA BATESON
Jellyfish BENJAMIN BOYER
Damsel Fish JACKSON BOYER
Crush, Chum IZZI BRALY
Gill, Scuba Mask Dancer CORA DIRK
Bloat, Kai HALLE FISH
Tad GABRIELLE FOLSOM
Coral, Gurgle, Pearl's Mom GWENDOLYN ARABELLA "BELLA" GARCIA
Professor Ray, Vacationer GABRIELLA HERNANDEZ
Nigel, Sheldon's Dad ADRIEL JIMENEZ
Sheldon ALEJANDRO JIMENEZ
Squirt LEANNA LACK
Marlin SCOTTIE MCCORMICK
Bruce, Bubbles SKYLAR MCGRADY
Nemo NORA MEWBORNE
Peaches, Anchor, Tad's Mom LARA MACE TROCHE
Pearl, Breeze ASHLYN WOOLDRIDGE

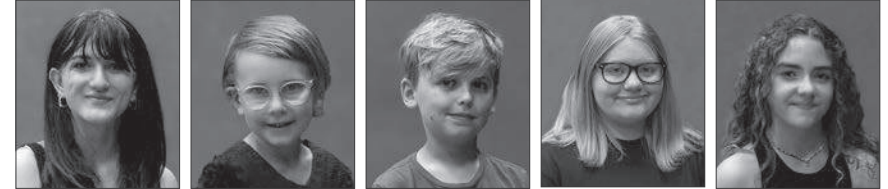
PRODUCTION TEAM

Director SARAH ROBINSON
Music Director MORGAN MILLIGAN
Choreographer BRYAN MEZA
Stage Manager JERRY TEMPLETON
Technical Director JOHN LUTTMAN



TODD GROSECLOSE
 4531 Ayers Street, Suite #108
 Corpus Christi, TX
 (361) 994-4816
 Serving Corpus Christi, Flour Bluff,
 North Padre Island and Port Aransas

CAST



Sophia
Bateson

Benjamin
Boyer

Jackson
Boyer

Izzi
Brally

Cora
Dirk



Halle
Fish

Gabrielle
Folsom

Gwendolyn
Arabella "Bella"
Garcia

Gabriella
Hernandez



Adriel
Jimenez

Alejandro
Jimenez

Leanna
Lack

Scottie
McCormick



Skylar
Mcgrady

Nora
Mewborne

Lara
Mace Troche

Ashlyn
Wooldridge

WHO'S WHO IN THE CAST

SOPHIA BATESON (*Dory*), a sophomore at Flour Bluff High School, is absolutely thrilled to return to the PACT stage. Sophia most recently performed in *Godspell* at the Aurora Arts Theater, played Mrs. White in Flour Bluff's production of *Clue: High School Edition*, and performed as an ensemble member in last year's *Percy Jackson: The Lightning Thief*. "I am so grateful for the amazing production crew, my awesome cast mates, and all the parents who have helped out with this show!! Always remember to just keep swimming on!!"

BENJAMIN BOYER (*Jellyfish*) is excited for his friends and teachers to see the show. "This is my very first play even though I was born to be a star on the stage! I love Taylor Swift!!!!!!"

JACKSON BOYER (*Damsel Fish*) is excited to be a part of this show. This is his first play even though he took his very first steps on the PACT stage back in 2016. "I love axolotls!"

IZZI BRALY (*Crush, Chum*) is thrilled to be a part of her sixth community theater show and her second at PACT. She was previously in *Little Shop of Horrors* at Aurora Arts Theater. "I would like to thank my parents for their support and for driving me here, my friends in the cast for being so awesome, and the production team for all their help and support."

CORA DIRK (*Gill, Scuba Mask Dancer*) loves acting and always will. This is

Cora's tenth show and her first at PACT. Her shows in order (and where they were performed) are, Arts Express (Tucson, AZ): *White Christmas, Titanic, Jungle Book JR, Elf, Elf JR*; Pima County Community College (Tucson, AZ): *Sunday in the Park with George*; Arts Express: *Ragtime*; Harbor Playhouse: *Christmas Carol, Raise Your Voice JR*.

HALLE FISH (*Bloat, Kai*) has been in seven plays, and all of them have been in or have been associated with PACT. Her favorite scene in *Finding Nemo JR* is Scene 7 (when the pump is turned off with the tank gang) because they have to work together to get Nemo back to his dad. "I like this show because of the environment and that our cast and directors are always patient."

GABRIELLE FOLSOM (*Tad*) is making her musical theater debut in *Finding Nemo JR*. She has loved theater her entire life and is very excited to be a part of this production. Her favorite parts are the scene changes with the seagulls because, "they're hysterical." "I am grateful for my parents who always support me."

GWENDOLYN ARABELLA "BELLA" GARCIA (*Coral, Gurgle, Pearl's Mom*) is thrilled to be making her acting debut in *Finding Nemo JR*. "It's great to be with all these amazing people like my friends, Gaby and Izzi. This experience has been so much fun. She'd like to thank the directors for giving her a chance to "Go With The Flow."

WHO'S WHO IN THE CAST

GABRIELLA HERNANDEZ (*Professor Ray, Vacationer*) is excited to be in her very first show. "What I love about being in this show is that I got to make new friends and have fun with my best friend, Bella."

ADRIEL JIMENEZ (*Nigel, Sheldon's Dad*) has been in two plays at PACT — *Willy Wonka* and *Frozen JR*. His favorite scene in the play is when you first meet the Tank Gang and Nigel. "Acting is fun and I feel great doing it. I like that I get to move more freely on and off stage with this play."

ALEJANDRO JIMENEZ (*Sheldon*) is excited to be making his acting debut at PACT. He has been a volunteer at many PACT shows and is happy to be performing on the stage. His favorite part of the show is when he says he is H2O intolerant. "Being in Nemo JR makes me feel good and I love being in costume."

LEANNA LACK (*Squirt*) has been in two plays, *Frozen* and *Finding Nemo JR*. She has never acted anywhere else. She loves acting and plans to do as many plays as possible. Her favorite scene is the seagull scene. "I like the cast members in this show because if I mess up they cheer me up."

SCOTTIE MCCORMICK (*Marlin*) is in the 10th grade. This is not only his first show at PACT, but also his first musical. He is happy to have been given this amazing opportunity. "Thank you so much to my friends and family for being so cool."

SKYLAR MCGRADY (*Bruce, Bubbles*) has been in one other production. His favorite scene in this show is the shark scene because the song is catchy and an important point in the story. "I would like to thank my mom for planning other events around rehearsals and shows."

NORA MEWBORNE (*Nemo*) has been in shows at school and around San Antonio. "It's been a very fun experience having a main role here in *Finding Nemo JR*."

LARA MACE TROCHE (*Peaches, Anchor, Tad's Mom*) usually performs in her school's fall musicals, but when she heard about *Finding Nemo JR*., she couldn't miss out. This is the fourth show she has performed in and the fifth she has been a part of. She loves performing and being able to participate in one more musical before she graduates from high school. "This show has allowed me to meet all sorts of new people and even got me a job in my home town!"

ASHLYN WOOLDRIDGE (*Pearl, Breeze*) has performed in two other productions, including *The Little Mermaid*, where she played Jetsam. She feels that acting is a way to express how much she enjoys the feeling of life, "It just makes me feel better about myself and my confidence." Her favorite scene in *Finding Nemo JR* is the Drop Off scene because it is funny but dramatic at the same time. "What I like about this show is that I'm working with lots of people I have worked with before but I'm also working with new people."

WHO'S WHO ON THE PRODUCTION TEAM



JOHN W. LUTTMAN JR.
(Technical Director) has been teaching Theatre Arts at Rockport-Fulton for the past 10 years and is super excited

to join the Port Aransas Community Theatre family. "Thank you for all the encouragement and support."



BRYAN MEZA
(Choreographer) is glad to have been given this opportunity to work on the production team for *Finding Nemo, JR.* — and to make his PACT debut. He has enjoyed working with everyone involved in bringing the coral reef to life. "Thank you for supporting live theatre, and I hope you enjoy the show. Sit back, and *go with the flow!*"



MORGAN MILLIGAN
(Music Director) has been performing on the PACT stage for more than 10 years. You may have seen her in *Shrek the Musical, Noises Off, Little*

Shop of Horrors or *The Lightning Thief: The Perry Jackson Musical*. She also directed *5 Lesbians Eating a Quiche*. Morgan would like to thank her family for their endless patience and support.



SARAH ROBINSON
(Director) has a degree in Theatre Education from Texas A&M University – Corpus Christi and is currently

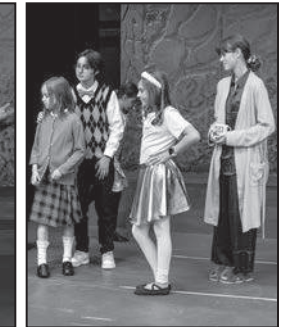
pursuing a second bachelor's degree in Medical Lab Sciences. She taught middle school theatre for two years at Cade Middle School in Victoria, Texas. While this is Sarah's third show with PACT, this is her musical directing debut. She was in PACT's *Little Mermaid* (Scuttle) and *The Lightning Thief: The Perry Jackson Musical* (Annabeth). Sarah would like to thank her mom, dad, her sister, Rachel, and her brother, Connor, for being so flexible with her crazy overloaded schedule. She dedicates this show to her late grandmother, Charlotte Robinson, who always made sure to tell Sarah how proud she was of all she chose to do — and to God, who is truly the Marlin to our Nemo when we feel lost in life.

WHO'S WHO ON THE PRODUCTION TEAM



JERRY TEMPLETON
(Stage Manager) has been in PACT shows since the 2nd grade. Going from actor to being on the crew has been a very fun learning experience. His favorite scene in the

show is all of them because he was a part of the creative process for every scene. However, if he had to pick just one scene, it would be *We Swim Together* because the choreography is so fun. "I am so excited to either keep working in the background of shows or to be back on stage!"



HIGHLAND AC

SERVICE SALES INSTALLATION

EST. 1976

(800) 899-8116 • highlandac.com • TACLB29839E

FINE CUISINE PREPARED ON-SITE

At your home, vacation rental, or business.

Let our **"Personal Chef"** do the cooking!

Cooking Classes Available

361.402.5507

5th Flavor
5thFlavor.com



Thank you



for supporting PACT

April 25- 27, 2025
texassandfest.org


Peyton's
Beach Carts

Monday – Sunday
8 a.m. – 8 p.m.

(361) 800-2183
info@peytonsbearcarts.com

Beach carts with Bluetooth for your enjoyment and delivery to your location for your ease.



MISSION OF PACT

The Mission of the Port Aransas Community Theatre is to entertain, inform and educate, thereby enriching the cultural life of the Texas Coastal Bend area. PACT shall provide area residents and visitors the opportunity to attend and participate in quality presentations of a cross-section of the finest theatrical works available. PACT shall provide education in the theatre arts to adults, young adults and children. In meeting these goals, PACT shall be mindful of the standards of its audiences and shall maintain fiscally sound management.



SPECIAL THANKS

- IGA Family Center, Port A Pizzeria and Jackfish for displaying show banners.
- Port Aransas South Jetty, The Island Moon and the Port Aransas Tourism Bureau & Chamber of Commerce for promoting PACT shows.
- City of Port Aransas for the award of hotel occupancy tax funds for PACT's 2022, 2023 & 2024 seasons.
- River City Roofing, Zarsky Lumber and Art Shanklin Construction for donating to the PACT Drive-In.



PACT BOARD OF DIRECTORS & STAFF

Rick Adams, President
Glenda McCormick, Vice President
Nicole Boyer, Treasurer
Rhonie Stuart, Secretary

Tiffanie Arnold Ray Dillahunty Lisa Shelton
Annette Berksan Yvette Jimenez

Staff

Su-z Kleinhans, Theatre Manager

Non-Board Contributor: Alex Berksan: Show Photography



ON STAGE IN THE COASTAL BEND

The Coastal Bend is home to several wonderful theatres. Book your seats today.



Aransas Repertory Theatre
99 N. Austin, St., Rockport, TX
(361) 423-0152
aransas-rep.com

AURORA ARTS THEATRE



Aurora Arts Theatre
5635 Everhart Rd
Corpus Christi, TX
(361) 851-9700
auroraartstheatre.com



**Harbor Playhouse
Community Theatre**
1802 North Chaparral
Corpus Christi, TX
(361) 888-SHOW (7469)
harborplayhouse.com



NARADA RADIO COMPANY

Narada Radio Company
Audio Dramas
Corpus Christi, TX
Download and listen:
naradaradio.libsyn.com



Rockport Little Theatre
99 N Austin St, Rockport, Texas
(361) 450-1465
rockportlittletheatre.com

BURGERS · SEAFOOD · ISLAND COCKTAILS



SUNSET & DOLPHIN CRUISES
361-749-5597



SCARLETLADYDOLPHINCRUISE.COM

Sandollar City

Beach House Rentals



SCAN ME



3038 On The Beach • PORT ARANSAS, TX • (361) 749-5000 • sandollarsityporta.com

Sandollar

SERVICES

PLUMBING, REPAIR, SUPPLY,
AND BACKFLOW TESTING

216 WEST AVE A • PORT ARANSAS, TEXAS • (361) 749-4274